

# Pneumatic Rotary Actuator



The Vapor Pneumatic Rotary Actuator is designed specifically for plug doors applied to tour coaches, intercity coaches and limo-buses. Incorporating technology proven in decades of demanding service, the Vapor Pneumatic Rotary Actuator provides superior reliability and ease of maintenance.

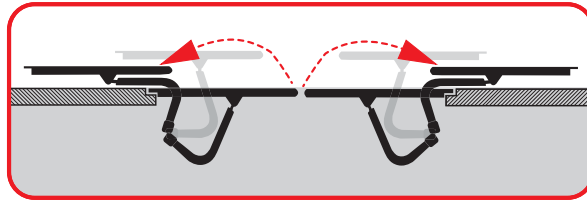
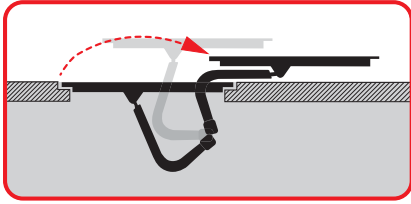
The Model RZ Actuator combines a double-acting pneumatic cylinder with a specially designed helical cam. It converts the linear piston stroke into rotary motion that is transmitted directly to the door shaft.

The RZ Actuator offers the advantage of an integrated "hold-closed" mechanism. The design of the helical cam secures the door shaft in the fully closed position when under pressure.

- Applicable to either single panel or bi-parting doors
- High torque for rapid, positive door opening and closing
- Compact, unitized design fits easily in confined spaces
- Mechanical simplicity provides extended service life with minimum maintenance
- Integrated "hold-closed" mechanism eliminates door wedges and frequent adjustment

*The BEST keeps getting BETTER*

# Pneumatic Rotary Actuator

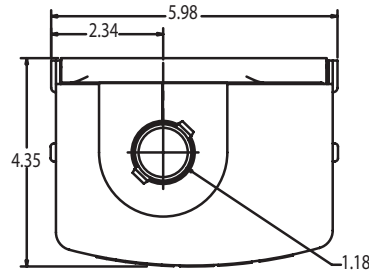


## APPLICATIONS

- Single panel and bi-parting parallelogram plug doors
- Limo-buses
- Tour coaches
- Intercity buses

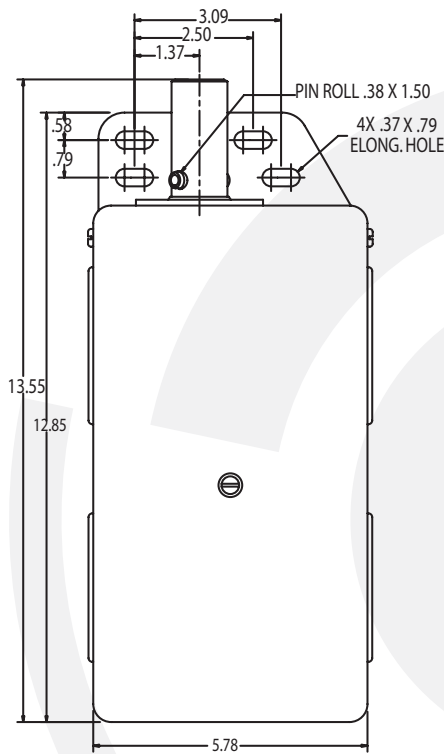
## FEATURES

- Integral anti-rotation "hold-closed" mechanism
- No door or jamb mounted wedges
- Compact space envelope



## TECHNICAL SPECIFICATIONS

- **Maximum torque in "hold-closed" position (@ 90 psi):** 220 ft-lbs
- **Recommended door shaft rotation:** 90°
- **Operating temperature:** -22° F to 176° F (-30° C to 80° C)
- **Envelope size:** 5.98" w x 13.55" h x 4.35" d
- **Operating pressure:** 90 – 125 psi
- **"Hold-closed" mechanism:** Zero lead cam surface at fully closed position



1010 Johnson Drive  
 Buffalo Grove, Illinois 60089 USA  
 Toll Free: 866.375.4126  
 Fax: 847.520.2222  
 Email: techsupport@vapordoors.com  
 www.vapordoors.com

