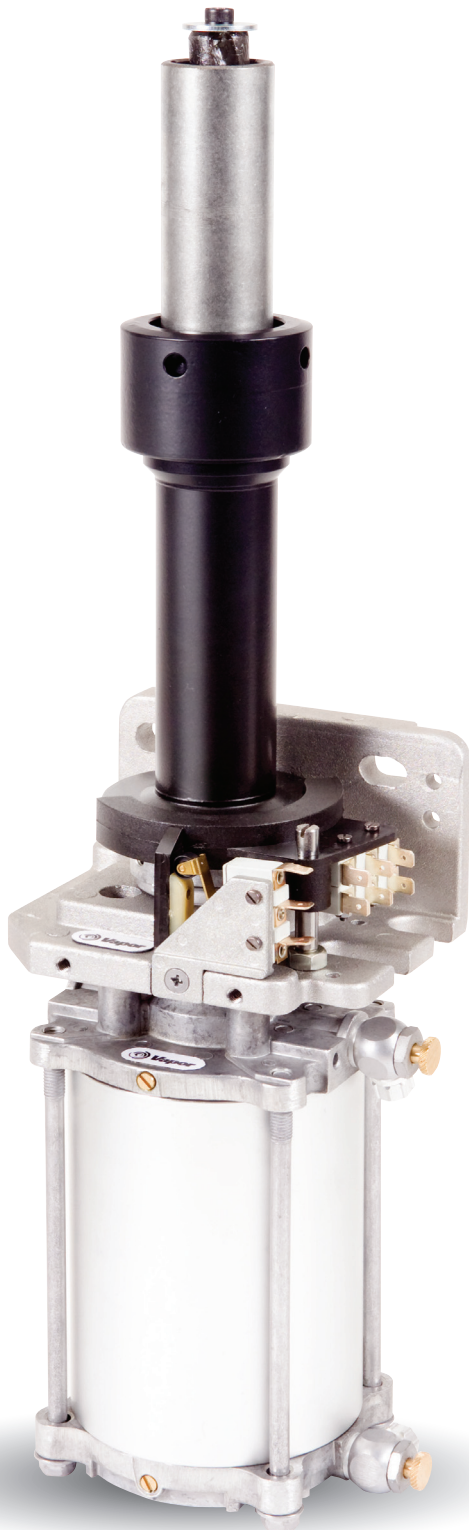


Pneumatic Lift-to-Latch Rotary Actuator



The Vapor Pneumatic Lift-to-Latch Rotary Actuator is designed for plug doors applied to tour coaches, intercity coaches and commercial-buses with compressed air systems.

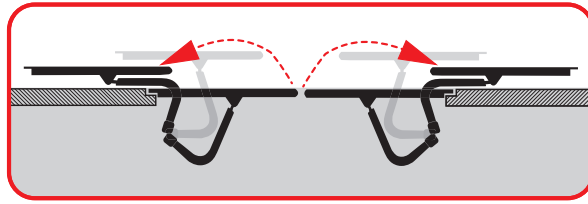
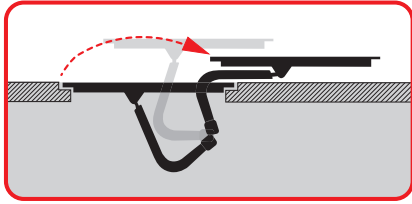
The Pneumatic Lift-to-Latch Rotary Actuator combines a double-acting pneumatic cylinder with a ball cage motion converter to provide rotary motion that is coupled directly to the door shaft. When the door panel reaches the closed position the actuator raises the panel to engage wedges mounted to the door panel and to the door jamb and retain the door in the closed position.

- Applicable to either single panel or bi-parting doors
- Unitized design minimizes intrusion into doorway area
- Integral switches for indicating door open, door closed and door lifted/obstructed



The BEST keeps getting BETTER

Pneumatic Lift-to-Latch Rotary Actuator



FEATURES

- Lift-to-Latch door retention
- Compact space envelope
- Bulkhead mounting

APPLICATIONS

- Single panel and bi-parting swing plug doors
- Tour coaches
- Intercity buses
- Commercial buses with compressed air supply

TECHNICAL SPECIFICATIONS

- | | |
|--|------------------------------------|
| ■ Operating pressure: | 116 psi (8 bar) |
| ■ Recommended door shaft rotation: | 90° |
| ■ Door panel lift at full engagement: | 0.78 in. (10 mm) max. |
| ■ Operating temperature: | -31° F to 158° F (-35° C to 70° C) |
| ■ Envelope size: | 12 in. H x 5.75 in. W x 4.90 in. D |
| ■ Door retention "Hold-closed" mechanism: | Lift-to-Latch |
| ■ Manual operation: | Air Dump Valve |



1010 Johnson Drive
 Buffalo Grove, Illinois 60089 USA
 Toll Free: 866.375.4126
 Fax: 847.520.2222
 Email: techsupport@vapordoors.com
 www.vapordoors.com